

Fuel3D Hand-held 3D Scanning System

Quick Start Guide

Model No. 634100

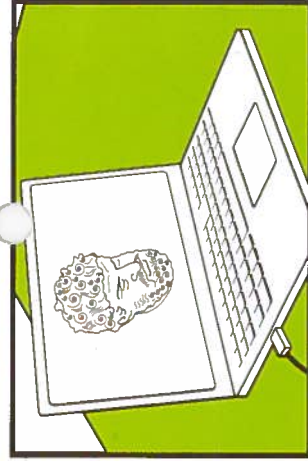


FUEL3D™

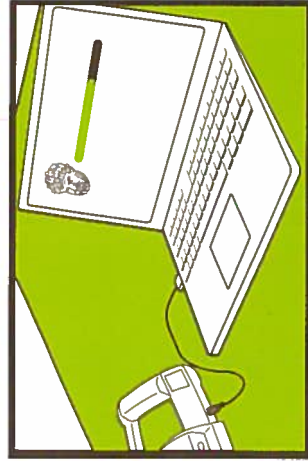
Fire up your creativity.

www.fuel-3d.com

Please read these instructions completely before use.



11. Select your scan from the project navigation panel. Process the scan further by using the crop tool to remove any unwanted background data. Scans can be exported in STL, OBJ or PLY file formats.



10. Preview the scan on the PC view finder. If you are happy, save it, close the view finder and the computer will automatically process. Typical processing time per scan is 30 seconds.

Fire up your creativity: Visit your account area on www.fuel-3d.com for the latest training materials, video's and support centre.

WARNING

- Epilepsy Caution: The Fuel3D Scanner incorporates flashing lights which may affect individuals who have photosensitive epilepsy or other such conditions. Users must accept full responsibility.
- High voltages are present in the camera. Do not open the case or attempt to repair it, there are no user-serviceable components inside.
- This product is designed for indoor use only at a maximum operating ambient temperature of 40°C
- The power plug shall act as the disconnect device and shall be readily accessible.

FUEL3D™

Fire up your creativity.

© Copyright 2014 Fuel 3D Technologies limited. All rights reserved. Fuel3D™ and its associated logo are trademarks of Fuel 3D technologies Limited and Fuel 3D, Inc. and are the subject of trademark applications or registrations in various countries around the world. All Fuel3D products and services are subject to continuous development. We reserve the right to alter technical specifications without notice.

Please check your Fuel3D system contents are complete and there are no visible signs of damage:

- Fuel3D scanner
- Three (3) tracking targets
- USB data transfer cable
- AC power adaptor
- International AC adaptor connectors
- Warranty card
- Fuel3D lens cloth

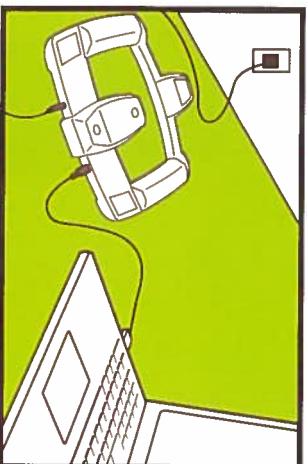
Note: All protective filming should be removed from the scanner before use. Finger prints on lenses significantly reduces output quality: please use the lens cloth provided.



1. Go to www.fuel-3d.com to create an account, register your device and download Fuel3D Studio software. Once the download has finished, run the installation wizard.



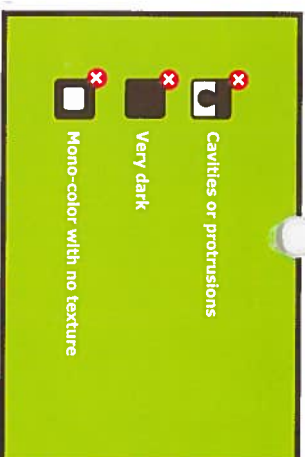
3. Open Fuel3D Studio software. Once the software is running, select a library location, create a new project and launch the PC view finder.



2. Plug your power cable into the AC mains with the other end into your Fuel3D device, then connect the device to the computer via the USB lead and wait for the device drivers to install.



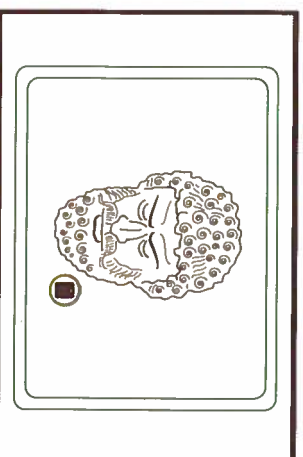
4. Select a suitable subject to scan. Note that a single scan captures an area roughly 12 x 8 inches/ 300x200mm.



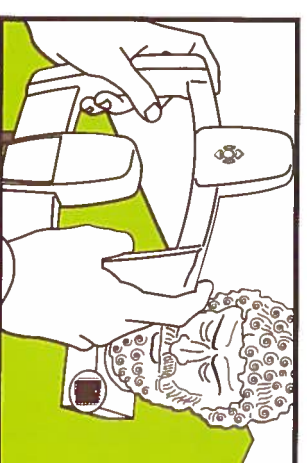
5. Objects with the above characteristics may not be suitable for scanning, or may require technical workarounds to capture successfully. See www.fuel-3d.com/faq for workarounds.



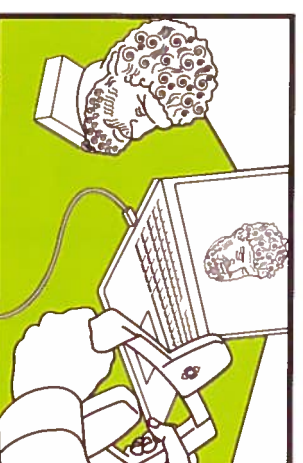
6. Position the tracking target on or close to the subject you want to image. Depending on the lighting conditions, you can turn on the guide lights in the PC view finder screen.



8. View the PC view finder screen to see the precise capture area and also to check the target is in view. The target will change from red to green when moving closer to or further away from the target/object.



7. Hold the scanner with two hands and position approximately 18 inches/ 450mm from the target directly facing the scanner. Ensure that none of the flashes are covered.



9. When the target is green keep the scanner still then press and hold either both or one of the trigger buttons until the flashes have fired.